

Donna Husband – Lead Commissioner, OCC

Emma Leaver – Service Director

Pauline Nicklin– Head of Service

Nicky Taylor – Operational Manager, Health Visiting

Angela Smith - Operational Manager, Health Visiting

Helen Lambourne – Family Nurse Partnership Supervisor

Margaret Fallon- Operational Manager,
School Health Nursing

Best Start In Life – Public Health Nursing

- Oxfordshire County Council commissions
 - 0-5 service delivered by Health Visitors and Family Nurse Partnership
 - 5-19 service delivered by School Health and College Health Nurses

National Picture

Position Statement

**Health Visiting and
the NHS in the next 10
years**

August 2018

**The Best Start: The Future of
Children's Health - One Year on**
Valuing school nurses and health visitors in England

POLICY AND POSITION STATEMENTS

The National Unit
Overseeing the delivery of the FNP programme

Oxfordshire 0-5 Service 2017-18

142,047
contacts with
families



73%

pregnant mothers
seen antenatally



7,173
births



99%

new birth
visits
completed



97%

babies seen
at 6-8 weeks

182
families in
the Family
Nurse
Partnership
Programme

94%
children
seen at 1
year old



94% children
seen at
2 years old

96%

mothers
received a
maternal
mood
assessment



Oxfordshire 5-19 Service 2017-18

24,440
contacts with
school aged
children



1471
onward
referrals



38,381
interventions
in schools



25% liaison
20% mental health & wellbeing
18% safeguarding
18% sexual health



100%
schools and
colleges have a
health improvement
plan in place

1,528
contacts with
young people



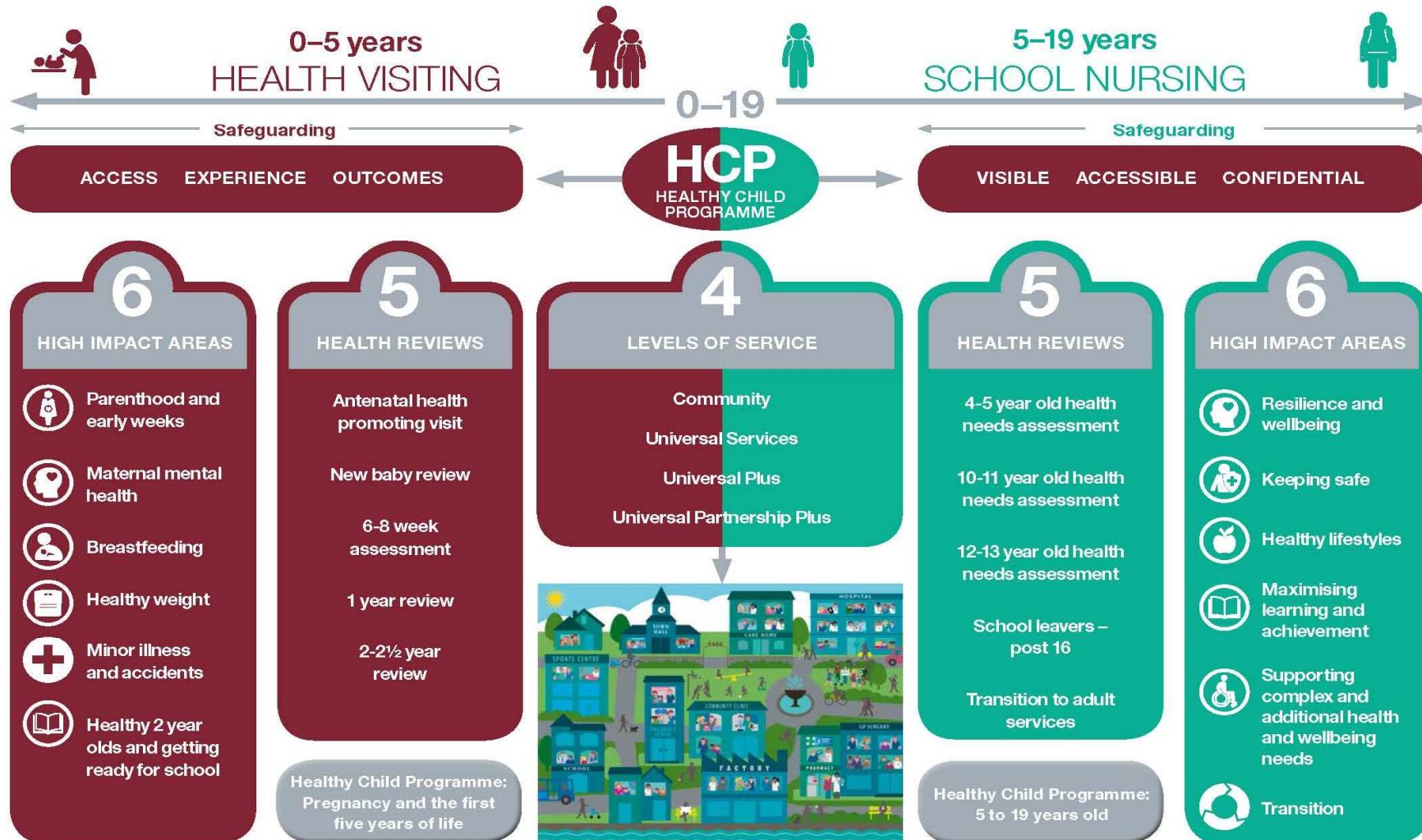
3,537
interventions
in colleges

76% sexual health
14% mental health &
wellbeing



All O♥R Health

Healthy Child Programme: The 4-5-6 approach for health visiting and school nursing



The workforce – Health Visiting

- Nursery Nurses
- Community Nurses
- HVs- Nurses with additional training at University - SCPHN
- Family Nurse Partnership Nurses

4 level service model for HV

- **Community** : work to support and develop local services and ensure clients know how to access them
- **Universal** : lead the delivery of the Healthy Child programme to families with children aged 0-5 years. We deliver a rolling health promotion programme and offer advice to support families to develop healthy relationships and attachments with their baby and child
- **Universal Plus** : provide additional support to families as episodes of care when a health need is identified e.g. support with post natal depression, infant feeding
- **Universal Partnership Plus** : working in partnership with family and other agencies to provide ongoing support to families with complex issues e.g. SEND, substance misuse, safeguarding concerns, LAC, teenage mothers. This level include the family Nurse Partnership

Family Nurse Partnership

- Offered to first time vulnerable teenage mothers.
- Licensed evidenced programme. Benefits children and families who have poorest outcomes. 9th year in Oxfordshire.
- "Oxfordshire remains one of the highest performing sites in the country" (FNP National Unit, 2018)
- April 2017-March 2018 worked with 608 Clients, Children, Fathers/Partners as Universal Partnership Plus.
- Intensive programme of up to 64 contacts over 2.5years.



Health visitors work with families & communities to improve access, experience, outcomes and reduce health inequalities



levels of service:

- Your community
- Universal
- Universal plus
- Universal partnership plus



universal health reviews*:

- Antenatal
 - New baby
 - 6 – 8 weeks
 - 1 year
 - 2 – 2 ½ years
- *mandated for 18 months



high impact areas:

- Transition to parenthood
- Maternal mental health
- Breastfeeding
- Healthy weight
- Managing minor illness & accident prevention
- Healthy 2 year olds & school readiness

#healthvisiting

The Child's Journey



1. Antenatal health review using promotional guide and maternal mental health assessment



2. New Birth visit by 14 days of age and family health assessment



3. 6-8 week health review and maternal mental health assessment



4. 1 year developmental health review using ASQ and maternal mental health



5. 2-2.5 year developmental review using ASQ questionnaires, assessing school readiness and liaison with early years



Non face to face records health review at 5 years



Transfer in visit

- Well child clinic
- Breastfeeding support
- Early days group



high impact areas:

Transition to parenthood

Maternal mental health

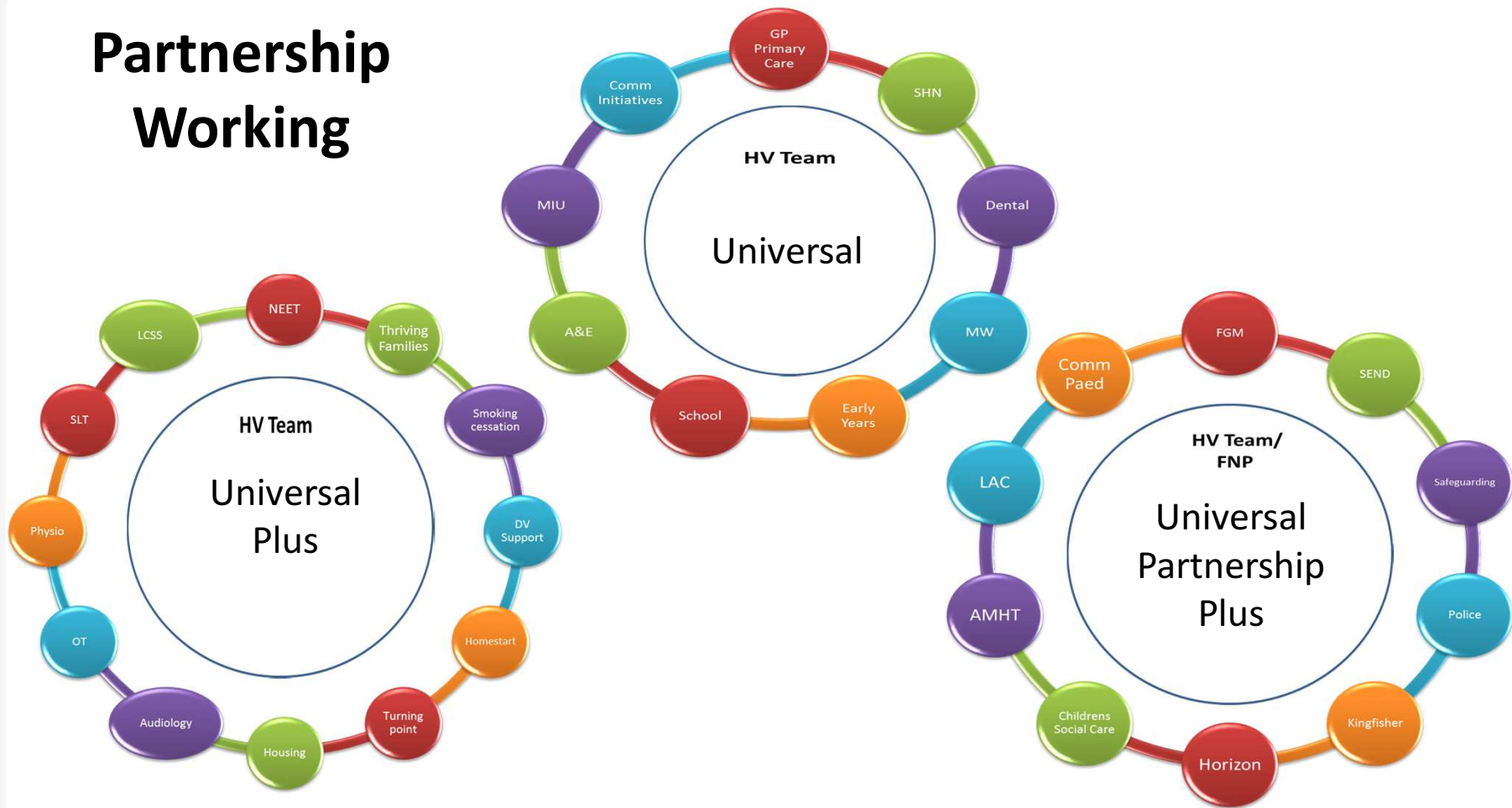
Breastfeeding

Healthy weight

Managing minor illness & accident prevention

Healthy 2 year olds & school readiness

Partnership Working



0-5 delivery following changes to Children's Centres

❖ **Maternal Mental Health –**

- Perinatal Mental Health Specialist HV
- Knowing me Knowing you Groups

❖ **Estates –**

- Working with Community Initiatives
- More home visiting

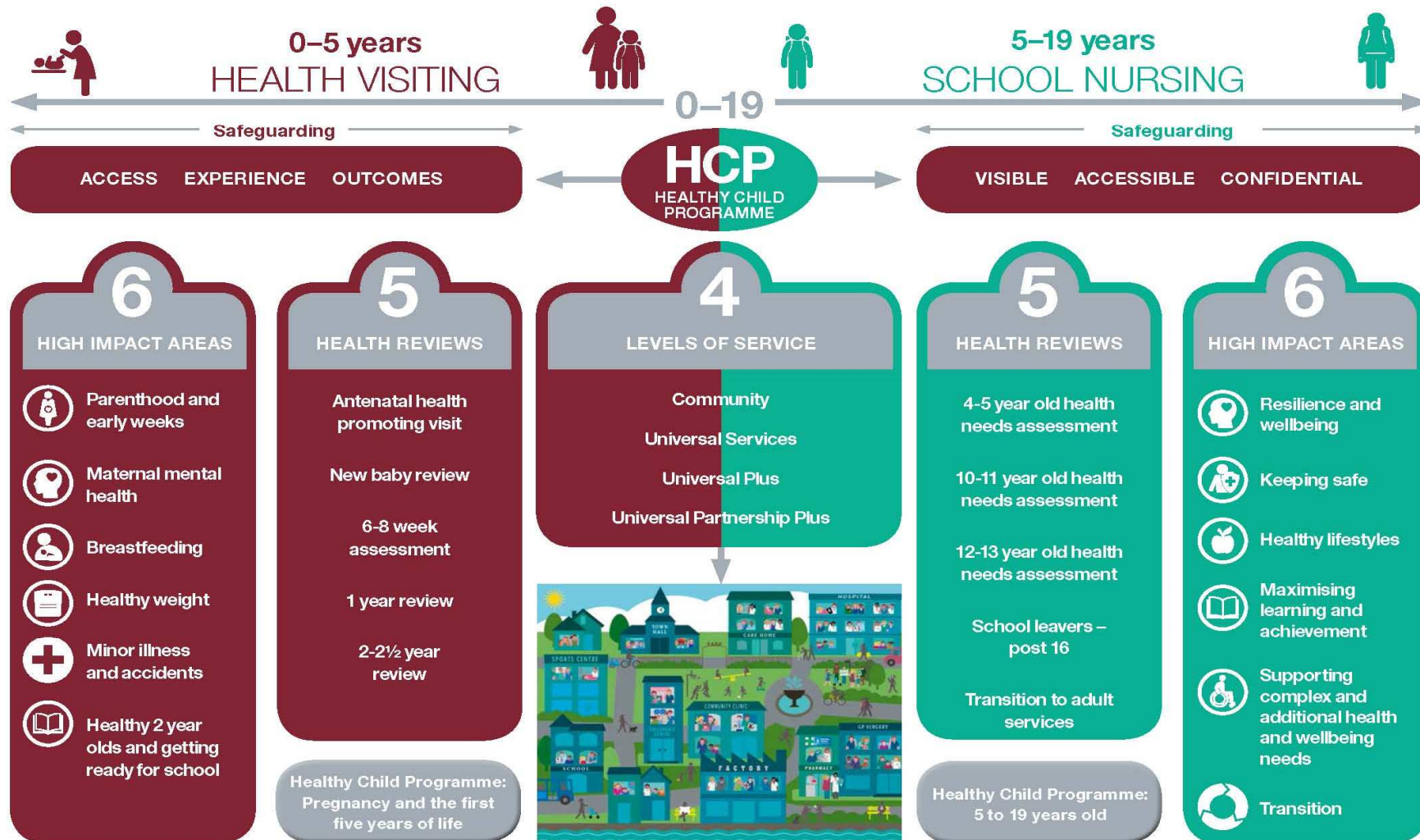
❖ **Establish new professional relationships -**

- Children and Family centres
- LCSS
- Consistency of health promotion messages
- Support for school readiness



All O♥R Health

Healthy Child Programme: The 4-5-6 approach for health visiting and school nursing



The Child's Journey

- Primary School SHN Team
- SHN Based in every Secondary Schools
- College Nurses



NCMP and follow-up

Health Needs Assessment

Transition to Primary school/ school readiness.



1:1 appointments and individual work

Confidential Drop-ins, referrals and 1:1

Transition to College and adult services
College / adult services

Health Promotion and education sessions

Transition to Secondary school



The workforce - School Health Nursing

- SHN Support Workers
- Community Nurses
- SHNs- Nurses with additional training at University - SCPHN
- College Nurses
- SHN Assistants – New role being developed

5-11 Years Offer

Oral health promotion

Hand hygiene

Transition – pre-school liaising with HVs and offer of Health reviews

Annual Health needs assessment – CP, CIN, EHA & Young Carers

NCMP reception & year 6

Promoting NSPCC ‘Pants’ rule and FGM

Enuresis Groups

Safety sessions - Water, road, bike, sun, internet safety & accident prevention

Growing -up session

Medical needs care-plan & EHCP

School readiness groups

LAC Health reviews

A&E and hospital attendance follow-up

Assessment of emotional health needs and referral to CAMHS

Drop-ins for year 5 & 6 students in targeted schools

Referrals- SALT, audiology

NCMP whole school event



SAFEGUARDING

11-19 Years Offer

Immunisations year 8 and 9

Smoking cessation

One to ones

Exam stress sessions

Transition to secondary school

Transition HA to college or leaving school



Education sessions – smoking, healthy lifestyles, risk taking sexual health

Transition to adult services

Drop-ins

Daily access

Sexual health and contraception offer and outreach

Leaving school preparation sessions

SAFEGUARDING

School and Community

Promote 'Our Healthy Year' resources to schools

Collaborative Partnerships

Social media

LCSS

Mental Health In-reach

New Parent meeting

Staff training for Anaphylaxis, asthma and epilepsy



SHIPs and CHIPs

Head Teacher and Senior Leadership meetings

PSHE in Special Schools

CASO

Support to families

PH initiatives, promotion and events – supported by PHPR

SHN newsletters Termly parental newsletters, promoting healthy lifestyles

SAFEGUARDING

What they say:

SHN:

I have used the advice the school health nurse gave me and it has helped a little bit'

FNP:

"I just wanted to text u saying thank you for everything you have done, you and all the nurses are amazing and the whole service is brilliant. I don't know where I would be without you."

HV:

The health visitors have always been really helpful to me. Especially battling Postnatal Depression. (My HV), has been amazing. Couldn't be happier with the work they do

HV:

"Overall a professional and caring service" IWGC for HV

FNP: "I've learnt a lot from having B (Nurse) support me! She's being amazing and I don't think I would of been able to do it without her. She has made me realise that the most important resource for my baby is ME and I think this service is very beneficial". Client age 18

SHN:

Words cannot express just how grateful we are for your involvement and support in our very difficult family situation. In our opinion you fulfilled your professional capacity perfectly in all areas and then also went above and beyond. We couldn't have asked you to do any more.